

PRESS RELEASE

RELEASE: Immediate

CONTACT: Sam Everett
Channel Marketing Manager
(800) 633-3800 x 419
severett@olyfast.com

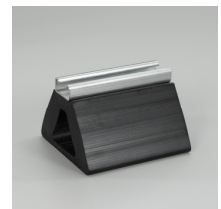
OMG Introduces Strut Model PipeGuard for Multiple Pipes

Agawam, Mass., May 7, 2009 – OMG has introduced the Strut Model PipeGuard for applications requiring support for multiple small pipes in one location.

Diverse and flexible, the Strut Model PipeGuard can be used for a wide range of small roof-top pipe applications including gas and refrigeration lines, electrical conduit and HVAC, among others. The system is compatible with PVC, copper and cast iron pipes.

As with the other PipeGuard units, the Strut Model has a wide base for maximum stability, helps to dampen pipe motion from vibration, is fast and easy to install and will not damage roofing materials. The new Strut Model PipeGuard features a heavy duty EPDM rubber base and a 1 5/8-inch galvanized strut channel that accommodates standard pipe support clamps, sold separately at most hardware, plumbing or electrical supply stores.


OMG
ROOFING
PRODUCTS
153 BOWLES ROAD
AGAWAM, MA 01001
413-789-0252
800-633-3800
FAX: 413-789-1069
WWW.OLYFAST.COM



“OMG PipeGuard is a safe alternative to traditional pressure treated wood blocks that can rot, splinter and damage the roofing system,” said Dan Genovese, product manager for OMG. “In addition, the simple design is easy to use and install.”

Each unit is six-inches long by four-inches tall and will support several pipes depending on their diameter. In addition, Strut Model PipeGuard units will not deteriorate from water or sunlight exposure so there’s nothing to break down or damage the roofing system.

Strut Model PipeGuard units are packaged 10 to the carton and are immediately available through OMG’s extensive commercial roofing distribution network. Field support is provided by OMG sales and technical team, along with nationwide, toll-free telephone support.

For additional information, visit www.olyfast.com or call (800) 633-3800 or email info@olyfast.com.

#